

Lowell Parks & Conservation Trust

Fall 2010 Newsletter

PRESIDENT'S LETTER

Dear Friends,

Cutting the ribbon for the Concord River Greenway was a highlight this summer for the LP&CT. It is a fine example of how a non-profit land trust can drive such wonderful projects with strong community support. Building relationships with city, state and other like-minded organizations has been a fundamental key for success. We continue to work toward the completion of the Concord River Greenway with the next two sections now fully designed.

Please do take the time to visit the green spaces that we manage. You'll certainly gain a lasting satisfaction that your contributions are indeed very worthwhile. Consider taking your interest one step further to becoming a land steward for one of our 'special places'.

Our nature is to be drawn to waterways and greenspaces. Sitting by a stream and listening to the water roll over the rocks, capturing the reflections on the water and seeing wildlife has a very calming effect, a meditation. Most of our lives are too busy with all the daily challenges. Take time to rest your concerns. The benefits of meditation have been well studied.

The summer has provided a cascade of green with pockets of bright flowers. As September approaches New Englanders look forward to colors on a grand scale. Each season brings a new sensory opportunity to visit our parks and projects.

Please look for progress on park construction behind the Spalding House. We're pleased that our work to protect that property is finally coming to fruition, thanks to both city and national park partners. This will be a great addition to the state and city-owned land situated above Pawtucket Falls. It will also enhance the land around the Spalding House, which is celebrating its 250th anniversary. Please help us commemorate this event. Besides a special evening on September 30th, we are raising funds to permanently endow the maintenance for the House. All members of LP&CT can feel good about what has been accomplished. There is much more to be done. We welcome your continued support.

Kind regards,

YOUTH LEADERSHIP



The Concord River Greenway has a new map and interpretive trail guide thanks to the thoughtful and creative conservation work of Spindle City Corps (SCC). This is the second summer that we've worked closely with this team of high-school-aged youth as a part of our year-round "Stewardship Through Leadership" (STL) environmental education program, which we run in partnership with Mass Audubon.

This youth-led project was the culmination of several days of planning and fieldwork to learn more about the ecology of this new riparian city park. We were fortunate to have several of the teens return from last year, enabling them to build on their experience working with us last summer. Youth in this summer's program, led by staff from LP&CT, Mass Audubon, Community Teamwork, Inc. (CTI), and the Lowell National Historical Park (LNHP) started their project planning by visiting and evaluating the success of their work last year at our West Meadow property. Last summer's SCC team conducted extensive trail maintenance, created a new trail, addressed the impact of all-terrain vehicle (ATV) use on the property, removed invasive plants, planted native species, and created our first ever "Interpretive Trail Map & Guide" (available in the Land Protection section of our web site, www.lowelllandtrust.org). Each of these projects involved extensive research and loads of sweat equity. These were youth-led projects, as advised and made feasible by the Trust and our partners at Mass Audubon, CTI, and LNHP.

This summer, SCC youth returned to West Meadow with pride to assess last year's projects, which yielded excellent results. It's only been a year since they did the bulk of their work at West Meadow, but already we have seen **(Cont. on p.3)**



Youth from Spindle City Corps creating an interpretive trail map and guide for the Concord River Greenway.

SPALDING HOUSE 250TH



Come Celebrate!

Don't miss this rare opportunity to one of Lowell's most historic properties!

Thursday, September 30, 2010
6:30 to 9pm
Look for your invitation in the mail!

DEB SOFIA — LP&CT VOLUNTEER



Periodically, we invite a volunteer to share their experiences:

I started volunteering for The Lowell Parks & Conservation Trust (The Trust) about a year after I moved to Lowell, which was 10 years ago. I believe it all started with the Alewife restoration and monitoring project. I wasn't even thinking about what The Trust was about at the time. I just thought catching and relocating fish sounded like fun.

In addition to the Alewife project, some of the other projects I've volunteered for are: Doors Open Lowell, the city-wide parks cleanup, RiverFest, the Lowell Folk Festival, and lock tending. My favorite has to be lock tending during the whitewater rafting season. Where else can you operate a lock system that was built in the 1800s for the benefit of the whitewater rafters? It is a very unique experience.

The Trust doesn't only look for volunteers for different projects, they also sponsor various fun events. Some of these are: a 10-mile walk along the Merrimack River from Lowell to Lawrence, bird watching in the Lowell Cemetery, tracking animals in the snow along the Concord River, and learning how to tap maple trees for making maple syrup.

Each time I attend an event or volunteer for a project, I learn more about The Trust, the City of Lowell, and myself. Little did I know that my "little fishing trip" would turn into volunteering for every project and attending every event The Trust is involved in. What better way to get acquainted with the city you live in than to participate in an organization that is very involved in keeping the city beautiful and, therefore, it's inhabitants happy.

LP&CT RECEIVES SIGNIFICANT GRANT SUPPORT FROM:

Theodore Edson Parker Fdn.

City of Lowell CDBG Program

Massachusetts Cultural Council



Aubert J. Fay Charitable Fund

Cultural Organization of Lowell (COOL)

Richard K. Donahue Sr. Park Maintenance Fund &

Alfred H. and Kathryn E. Coburn Park Fund &

Mary J. Bacigalupo Community Fund

of the Greater Lowell Community Foundation (GLCF)

Demoulas Foundation Frances R. Dewing Foundation

Joseph P. Donahue Charitable Foundation Trust

EPA Healthy Communities Grant Program

Fieldstone Foundation

Greater Lowell Community Foundation

Jessie B. Cox Charitable Trust Fund

Lowell Cultural Council

Massachusetts Environmental Trust

New England Foundation for the Arts—Arts Jobs (see p. 4)

NLT Foundation

Fund for the Arts, a restricted fund of the NE

Foundation for the Arts

Philips Medical Systems



RIVERFEST: ART GOES GREEN



LP&CT was pleased to partner with the Cultural Office of Lowell (COOL) to celebrate our 4th Riverfest and the completion of the downtown section of the Concord River Greenway. The new venue, in the Davidson lot, and sponsorship by The River 92.5 radio station, brought the festival to a new level. The event featured live local music, recycled art installations, and a live animal presentation. Participants even enjoyed visits from great blue herons overhead and snapping turtles in the river below. The new venue was framed by the Greenway's welcoming entrance, public art and multi-lingual signage. This new park space serves as a gateway to downtown and

encourages people to observe the scenic confluence of the Pawtucket canal and the Concord River.

The ribbon-cutting ceremony began with speakers reflecting on the partnerships that went into this successful first phase of the larger Greenway project. Speakers included Councilor Bill Martin, Brian Martin from Congresswoman Niki Tsongas' office, Senator Steven Panagiotakos, Kurt Gaertner from Executive Office of Energy and Environmental Affairs, Charles Tracy from The National Park Service's Rivers Trails & Conservation Assistance Program, City Manager Bernie Lynch and LP&PT President Mark Romanowsky.



Riverfest: Art Goes Green was made possible through the support of COOL, the City of Lowell, AE Com/BSC Group, Browne and Rowe, the New England Foundation for the Arts (Fund for the Arts) and numerous sponsors (logos below). We're pleased to be able to feature several public art components, especially

the Greenway's permanent public art, designed by Wopo Holup, as well as temporary art installations by Bill Turville and Jay Hungate.

LP&CT President, Mark Romanowsky, commented during the event that as a physician, he encounters the need for stress management in people's daily lives. He went on to say that he thinks open spaces, like the Concord River Greenway, give people the opportunity to find quiet moments in nature during a busy day which plays an important role in managing stress and quality of life. The Greenway encourages you to take a few moments to reflect on the Concord River, as Thoreau once did, basking in the natural beauty the city has to offer. We hope you enjoy this new addition to the city, an oasis within downtown Lowell.



YOUTH LEADERSHIP, CONT.

an enormous decrease in ATV use and the land's habitats have stabilized and regenerated at an unprecedented pace.

With the hindsight of their success on the West Meadow property, they were able to plan out effective projects on the Greenway. The public now has improved access to the Concord River via the new "Cardinal Flower Trail" and through the "Concord River Interpretive Trail Map & Guide," which highlights various habitats, spur trails, experimental invasive plant mitigation sites, and fishing access points. This map and guide is available on the Concord River Greenway section of our web site.

These project successes were highlighted during our August RiverQuest program and will be featured during our Sept. 12th River Day. In addition, employee volunteers from Patagonia will be conducting a clean-up in early September. We're fortunate to have a strong corps of land stewards that can also follow-up on this work.

Wow! Looking back at the attention these youth have given to our green spaces over the past several months can really take your breath away. We hope these youth will continue to help make Lowell's scenic side so vibrant and accessible. It's all possible because of the support of members like you, as well as, friends, neighbors and local youth leading the charge, as stewards of the land. Thank you to all who have pitched in over this past year to help the Trust complete its mission, especially to all of the wonderful youth who inspire us all!

SPECIAL PLACES PRINTS



A large selection of Mark Romanowsky's paintings are now available as true-to-size professional prints on canvas. All proceeds support the Lowell Parks & Conservation Trust.

www.lowelllandtrust.org or
call us at (978) 934-0030.

CONCORD RIVER GREENWAY RIBBON-CUTTING



Celebrating the event are (L-R): City Manager Bernie Lynch, Senator Stephen Panagiotakos, LP&CT Executive Director Jane Calvin, LP&CT President Mark Romanowsky, City Councilor and LP&CT Board Member Bill Martin, Brian Martin representing Congresswoman Niki Tsongas, and City Councilor Joseph Mendonca.

FALL 2010 PROGRAM SERIES

PLEASE RSVP (978) 934-0030

You only turn 250 years old once...

So we thought we'd make it an event!

Don't miss this rare opportunity to see one of Lowell's most historic properties!



Thursday, September 30, 2010 (6:30-9pm)

Hearty hors d'oeuvres
Wine from Stonehedge Inn

Look for your invitation in the mail or
call 978-934-0030

\$125 per person/\$250 per couple

Silent Auction featuring hand-painted furniture by Western Avenue Studio artists. [Photos of items at www.lowelllandtrust.org](http://www.lowelllandtrust.org).

Event proceeds support the Spalding House Endowment so the house will still be here for its 500th birthday.

River Day - Concord River Greenway Tour

Sunday, September 12, 2010 2:30 pm



Take a walking tour of this newly paved section of the Greenway, explore a new nature trail along the river, learn about the corridor's history, and see the new installed public art. Led by LP&CT staff and a Lowell National Historical Park ranger. *Meet at the Lawrence St. end of the Greenway, parking also available at the Lawrence St. entrance to the Lowell Cemetery. Come early to visit with youth from our environmental ed. program.*

Special Places: Mark Romanowsky Exhibit



Saturday, September 25th, 1-4 pm
at the Spalding House
383 Pawtucket Street, Lowell

Please join us at the Spalding House for a special exhibit of Trust board member, Mark Romanowsky's oil paintings. The collection includes images of Lowell, the surrounding area and the eastern seaboard, including Nova Scotia. Many of Mark's paintings feature properties protected through LP&CT's urban land protection program. Professional prints (signed and numbered) will be available for purchase or can be ordered online (www.lowelllandtrust.org).

Get Your Hands Dirty!

To RSVP: call 978-934-0030 or visit our website.

At the Spalding House... Help us prepare the house for its 250th birthday. Every **Saturday morning in September**, (9am-12pm).

On the river... Join volunteers from the Patagonia company to clean-up along the Concord River corridor. **Thursday, September 9, 2010, 10am.**

Other ways to help... We're also always looking for **office help** with mailings and for **land stewards** to adopt one of our properties.

ASIAN LONG-HORNED BEETLE

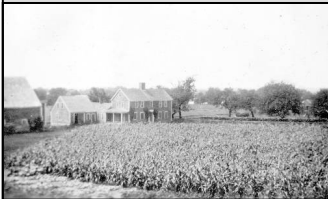


Beetle Found in Worcester & Boston

A new highly invasive insect has been found in Massachusetts, which has the potential to cause widespread damage to a broad spectrum of tree species, endangering our beloved tree canopies. The invasive Asian longhorned beetle (ALB), *Anoplophora glabripennis* (Motschulsky), grows and reproduces within healthy and stressed deciduous hardwood tree species, such as maple, birch, horse chestnut, poplar, willow, elm, and ash. The beetle eventually kills the host tree. Look for glossy black beetle, 1-1.5" long with white spots. This beetle is noticeable once found, especially near or on host tree species with exit holes about 3/8" around.

The ALB hitchhiked to the United States nestled deep within hardwoods cut into crates and pallets and used to import goods from Asian countries. Please keep an eye out for this beetle and report any sighting to 1-508-929-1300. (Source: USDA APHIS)

HAWK VALLEY FARM



The Lowell Parks & Conservation Trust and The Trustees of Reservations

have partnered to conserve a critical five-acre parcel along Clay Pit Brook in Lowell's Pawtucketville neighborhood. This land, once the core of the historic

17th century Hawk Valley Farm, is situated between Varnum Avenue and the Lowell Heritage State Park's 'Regatta Field'. In May 2009, a Conservation Restriction (CR) was placed on the property with the land then sold back to the Varnum Family, who first settled on it in 1664 and have lived there continually through the present day.

To ensure that this local treasure is maintained as open space for the people of Lowell and surrounding communities, we are raising funds for its permanent stewardship. **To contribute to the special fund, please check off the Hawk Valley Farm box on the reply form (page 6, back of newsletter). We appreciate your support!**

DOUBLE YOUR DONATION

Ask your employer about its Matching Gift Program.

Current business participants include:

- Arbella, Aspect, Autodesk, Inc., Bickling Financial, Bristol-Myers Squibb, ca, FHI, HP, IBM, Juniper Networks, Millipore, National Grid/MA Electric, Polaroid, Sun Microsystems, and Verizon.

Please remember to submit your **matching gift form** with your next donation to LP&CT.

FIND US ON:



WE THANK

THE FOLLOWING FOR SIGNIFICANT IN-KIND SUPPORT:

- Anstiss & Co., P.C.
- Eno, Boulay, Martin & Donahue
- LDFC/Lowell Plan
- UMass Lowell Inn & Conf. Center

RIVER MEADOW BROOK

LP&CT receives grant, funded by environmental license plate funds, for work on River Meadow Brook.

As you drive along the Lowell Connector, driving into the city, look to your right. You'll see a green ribbon of land alongside the highway that follows the corridor of River Meadow Brook, historically known as Hale's Brook. The 24-square-mile watershed of River Meadow Brook, a significant tributary to the Concord River, includes Billerica, Carlisle, Westford and Chelmsford.

Currently, River Meadow Brook is invisible to the broader community, so through a two-year grant from the Massachusetts Environmental Trust, we hope to raise some awareness about its history and ecology. We've assembled a team of collaborators that will be essential to the project's success. Historian Gray Fitzsimons will research and document the cultural and land use history features of this little-known corridor. Mass Audubon's Ecological Extension Service, will expand their prior work on the Concord River corridor, to conduct an eco-inventory of River Meadow Brook. Volunteers from Patagonia stores will join them in their fieldwork. Finally, we're pleased that UMass Lowell's geochemistry students will incorporate the corridor into their coursework.

We'll keep you apprised of our progress and will offer opportunities to explore this corridor and even participate in a clean-up or two. If you live in one of the above-mentioned communities, we would especially appreciate your involvement.

JOLLENE DUBNER PARK CAMPAIGN



Thank you to those of you that have given generously to the Jollene Dubner Park Endowment Fund Campaign. We're nearing our goal, so if you haven't already contributed your **support can help put us over the top**. As you're probably aware, the park is named for a founding member of the Lowell Parks & Conservation Trust who died in 1994. The Park commemorates Jollene's spirit and heart-felt commitment to environmental protection.

As a board member her passion for protecting public parks and open spaces helped to shape the organization's direction in its formative years.

The Lowell Parks & Conservation Trust created the park in cooperation with the City of Lowell in November 2000. LP&CT is seeking one-time gifts to fund a permanent endowment of \$35,000 to be held at the Greater Lowell Community Foundation. Your gift will help ensure that the park continues to be maintained with the highest quality care. Of course, gifts of all sizes will help us reach our goal.

To contribute to this special fund, please check off the Jollene Dubner Park box on the reply form, (page 6, back of newsletter). We appreciate your support!



Support the Lowell Parks & Conservation Trust!

- || cars
- || trucks
- || motorcycles
- || boats
- || rvs
- || campers

donate your vehicle



call: 866.628.2277

www.lowelllandtrust.org

PLEASE NOTE: ALL DONATIONS LISTED BELOW WERE RECEIVED BETWEEN **April 13, 2010—July 31, 2010**

SUSTAINING MEMBERS

Sustaining members provide ongoing monthly support. Donations noted below are annualized. We've now made it easier for you to become a sustaining member (monthly donor)!

[Click Donate Now on our website!](#)

Sustaining Members (\$250+)

Walter Bacigalupo
Stephen A. Conant & Nancy Rourke
Matthew C. Donahue
Nancy & Henri Marchand
The McCauley Family

Sustaining Members (\$100-249)

Cynthia & Charles Calvin, Jon & Joni Dubner, Matthew Foster, Robert & Jane Gilmore, Sheila Kirschbaum, Richard & Nancy Pitkin, DJ Prowell, Carolyn Walsh

Sustaining Members (\$1-99)

Beverly Coughlin, A'ndrea & Brian Cutler, Elaine Demetroulakos, Laurel & David Martin, Lisa FitzGerald Wagner

J. DUBNER PARK DONORS

Please support those businesses that support our work (bold).

Jollene Dubner Donors \$200-250

Anonymous, Lisa A. Gwiazda & Matthew Donahue, First Parish Unitarian Universalist, Lowell Heritage Partnership, Janet McCabe, Wayne & Susan VanBenschoten

Jollene Dubner Donors \$100+

Alfred Coburn, John Fitzsimmons, Blake Ford, **Harris Beach**, Dr. Theodore C. Max, Martha Mayo, Louis & Freda Melkun, Karen Pelto, Anthony G. Pillo, Paul & Lucille Roser, Jeanne Thompson, Paul D. Williams

Jollene Dubner Donors \$50-99

Gladys Anderson, Bill & Joanne Beevers, John Couture, George Curry, Mr. & Mrs. Stephen Donachie, Lauris Donovan, George Leiter & Alaric M. Doolittle, Joni & Jonathan Dubner, Patricia Dudeck, Robert & Mary Fusaro, Stephen and Maureen Gervais, Mr. & Mrs. William Ghee, Sonia Ruth W. & Jean-Francois Hamel, **HEFCO Wiring Co., Inc.**, Neal & Margaret Hoffman, Mr. & Mrs. Richard Kahler, **Lowell Spinners**, Janet Mac Callum, Regina McCarthy, David and Margaret Reiter, Mary & Suzanne Tranquille, Dan VanLeeuwen, Adam Locke & Julie Zahniser

Jollene Dubner Donors \$1-49

Fran Donovan, Rev. Paul J. Drobins, Dr. Saul Finer, Catherine & John Goodwin, Judith Gorman, Edward & Susan Hollingshead, Harvey & Gail Klain, Anne Mulvey, Bruce & Donna Nawoj, Dr. Paul D. and Carol W. Ohlbaum, Alice Salzberg, Bonnie Sanderson, Ann & Ken Stone, Shirley B. Waters, Joseph & Jane Yagey

ANNUAL FUND DONORS

Annual Fund Donors (\$250+)

Alfred Coburn

HAWK VALLEY FARM

Hawk Valley Farm Lead Donors \$1,000+

John Hamblet
Hope & John Hamblet, Sr.
Laurel & David Martin

Hawk Valley Farm Donors \$500+

Evan Schapiro & Belinda Juran

Hawk Valley Farm Donors \$250+

Carol Cookingham & Jerry DiBello

Hawk Valley Farm Donors \$100+

Dr. Stephen Fisher
Mary & Dan Hanley
Jack Wrobel

RENEWING MEMBERS

Please support those businesses that support our work (bold).

Renewing Members \$10,000+

James Calvin & Kamala Madhu

Renewing Members \$250+

Lowell General Hospital

Renewing Members \$ 100-249

Mr. Reed Anthony, Peter & Rosemary Aucella, Richard Brouillard, Gilbert & Jane Burns, Eileen and Charles Byrne, **Conway Insurance, Evan Coravos D.M.D., P. C.**, Ms. Colleen Fuller, Michael Goriensky, John Hassett, Stephen Hattan, **TEC, Inc.**, Thomas & Heather Kirwin, **Lowell Kiwanis**, Paula & Ray Leavitt, Karin Orr & Bill Loehfelm, Brian & Elise Martin, Martha Mayo, Mark and Virginia Meyer, James & Anabel Milinazzo, Dierdra Murphy & Stephen Moriarty, **J.F. O'Donnell & Sons Funeral Home**, Doug Preble, Elaine Reilly, Corey Sciuoto, J. Dayne Lamb and Gardner Stratton, Karen Szczesniel

Renewing Members \$ 50-99

John & Mary Abraham, **Anstiss & Co., P.C.**, Bob & Rita Bowen, Christine & Bruce Brown, Charles & Sheila Carney, Frank & Rose Marie Carvalho, Cheang Chea, Brian & Chrisanne Douglas, **George C. Eliades, Atty. at Law**, Joyce Fafard, **Wyman's Exchange Assoc.**, Gilbert and Claire Gagnon, Gary Green, Mary Ellen Hogan, Brian & Carol Holbrook, Karen Morris Levitt, Helen Littlefield, Jo-Anne Lund, Carol & Robert Marchand, Charles McColough, Tom Michelman, Marjorie Miller, Patricia & William M. Nickles, Joy & Tim Onasch, Daniel & Barbara Pearl, John Pearson, Jr., Michael & Caroline Rider, Edward Scollan, Jr., **Shaw Farm Dairy, Inc.**, Diane Swift, Kerry Moore & Sue Taber, Karin Theodoros, Esq., Ray & Diane Tremblay, Germaine & Ed Trudel, David Tweed & Mark Vincenzes

Renewing Members \$ 1-49

Mr. & Mrs. William Agnatovech, Ms. Suzanne Anderson, Louise Andrews, Beverly Bennett, Nicole Bernier, Ms. Annmarie Brems, William & Linda Bump, Kay Campbell, Ms. Nancy Carringer, William & Dorothy Clark, Arthur & Sandra Clough, Ronald & Joyce Cote, Dolores & Matthew Czyzycki, Alice G. Danas, John Deal, Dorothy Desmond, Kathleen Diamantopoulos, Ms. Alfreda M. Fawcett, Shirley & Leonard Fitzgerald, Ed & Barbara Flanagan, Mrs. Kathleen M. Flynn, Anastacia R. Forsley, Carol Freedman, **Attorney**

James J. Gaffney, III, Elaine Nugent & Jeff Glover, Mr. Jerold Golner, Catherine & John Goodwin, Mr. Frank Grady, Carl & Sandra Greenbaum, David & Kathleen Gwiazda, Gordon Halm, Ms. Carol Halstead, Jane Harman, Wayne & Kathy Hayes, Donald & Joan Hearn, Kathy Hirbour, Patricia Hogan, Peter Mahler & Kate Hollister, Anthony & Martha Iarrapino, Donald H. & Vanessa Johnson, Cara Johnson, Mr. Stuart Johnstone, Stavros & Donna Kanaracus, Catherine & Gerard Keane, Harvey & Gail Klain, Andre and Therese Lagasse, Theresa Lally, Claudine Langlois, C o n n i e Lanseigne-Case, Judith Larter, Ivy Lee, Robert & Margaret Leighton, Timothy Little, Elinor P. Lynch, Mr. Kurt E. Mathias, Mr. Daniel F. McCarthy, Ruth Messer, Ray & Trudy Michel, Bob Molinari, Suzanne Mollieur Beebe, Emile & Rachel Montminy, Richard Muehlke, Susan Nealon, Carolyn & Bill Norris, Karen Norton, Frances Nowak, Maurice Comtois & Marian O'Brien, Jean O'Neill, Tina Freitas & Gloria Parker, R. Edward Roach, Bruce Robinson, Nicholas Rubino, Charlotte Paul-Rust & James Rust, Charles Sarantos, Mary & James Scanlon, John & Kristin Sorota, Thomas Stupakewicz, Ursula Szylyvian, Mary Talbot, Mr. J. David Titterington, Mr. Jason Vinas, Becky Warren, Ms. Colleen Wojcik

"This partnership has given our teens a unique opportunity to become part of a relatively new and interesting conservation project (Concord River Greenway), ...motivat[ing] these teens in a way that feeds their desire to improve the community, as well as their own confidence."

J. Ehler, Community Teamwork, Inc., commenting on our summer environmental education program with the Spindle City Corps led by LP&CT's Brian Cutler and Mass Audubon's Sally Farrow

NON-SOIRÉE DONORS

Thank you to those that donated in lieu of attending our annual Soirée in honor of the 20th Anniversary of LP&CT and 250th Birthday of the Spalding House!

Non-Soirée Donors \$100-249

Nancy Rourke & Stephen Conant
Kay & William Doyle

Non-Soirée Donors \$50-99

Anonymous, Robert Bassett, Martha Mayo
Jack & Michele Reynolds

Non-Soirée Donors \$1-49

Clementine & William Alexis, Eleanor Belanger, Judy & Alan Blackburn, Gilbert & Jane Burns, Richard & Anne Cavanaugh, Lauris Donovan, Carol Drapeau, **Wyman's Exchange Assoc.**, Joyce Frazee, Ms. Colleen Fuller, Anthony & Martha Iarrapino, Frank Makarewicz, Rosemary Noon & Paul Marion, Bill & Martha Martiny, Martha McGowan, Howard & Alberta Moore, Edward Parsons

Thank you to the many donors that have contributed to our three special endowment campaigns:

- Jollene Dubner Park**
- Hawk Valley Farm CR**
- Spalding House**

Support the Lowell Parks & Conservation Trust. Become a member or renew today!

The **Lowell Parks & Conservation Trust** relies on membership dues for continuing our **mission** to protect the parks and open spaces of Lowell. If you haven't already, please consider joining the Trust today or renewing your membership.

Is your membership current?
Please see your address label.

Yes, I want to support the Lowell Parks & Conservation Trust!

\$250 \$100 \$50 \$25 \$15 \$ _____

Notecards: # _____ sets (\$10/set + \$2/shipping)

I've enclosed a **matching gift** form from my/my spouse's employer.

SPECIAL!

I'd like to become a **sustaining 'green' member** and donate \$ _____ monthly through my credit card

Please call or email me about **volunteering:** _____ (mailings, land stewards, lock tending, etc.).

Payment method: Check enclosed

Charge my credit card:

Visa

MasterCard

AmEx

Account # _____

Exp. _____

Signature _____

Name & address: _____

(For LP&CT e-news!) EMAIL: _____

Please mail to: LP&CT, PO Box 7162, Lowell, MA 01852

✂

✂

✂

Fall 2010

Lowell Parks & Conservation Trust

PO Box 7162

Lowell, MA 01852

Address service requested

Non-Profit Org.

U.S. POSTAGE
PAID

PERMIT NO. 134
LOWELL, MA 01853

Fall 2010 NEWSLETTER

Printed on recycled paper

Special Places Prints on Canvas



A large selection of Mark Romanowsky's paintings are now available as true-to-size professional prints on canvas. All proceeds support the Conservation Trust.

Brochure & order form on-line
www.lowelllandtrust.org or
call us at (978) 934-0030.

Fall 2010 Events

Please RSVP (978)934-0030

River Day: Concord River Greenway Tour

Sunday, September 12, 2010 2:30 pm

Special Places: Mark Romanowsky Exhibit

Saturday, September 25th, 1-4 pm
at the Spalding House

Spalding House 250th

Thursday, September 30th, 6:30-9pm
at the Spalding House
Please call for your invitation
978-934-0030

LP&CT Board of Directors

Dorothy Bickling

Brian Chapman

Christine Cole (Treas.)

Stephen Conant

Matthew C. Donahue, Esq.

Lauris Donovan

Sheila Kirschbaum (Clerk)

Henri Marchand (President)

William Martin, Esq.

Dr. Mark Romanowsky

Jane L. Calvin, *Executive Director*

Brian Cutler, *Education & Stewardship Manager*

Jennifer Loher, *Project Specialist*

www.lowelllandtrust.org