



LOWELL PARKS & CONSERVATION TRUST

WINTER 2011 NEWSLETTER

Winter 2011 Newsletter

PRESIDENT'S LETTER

Dear Friends,

With such an active winter weather pattern upon us we hope you can shake off the doldrums as each new day brings more sunlight. Find some time to get outdoors to enjoy the beauty of winter. It provides a whole new spectrum of color splashed on the landscape covered with snow and ice. Please take advantage of visiting the parks and river walkways.

2010 was a special year for the LP&CT. We celebrated the **250th birthday of the Spalding House**. It was a night that transformed a house to a home. Many thanks to all the volunteers. The new park adjacent to the house has helped frame and distinguish the Spalding House. The **Concord River Greenway** was officially opened with great fanfare. We are encouraged that the completion is not far off. The work that has been done thus far is most gratifying for all who have been dedicated to the project. The Lowell community is fortunate to have legislators who appreciate the benefits of our waterways and what they add to the quality of life.

LP&CT also celebrated its **20th Anniversary** in 2010. It was started as a land bank, providing land owners and the city a means of transferring property to maintain open space. It has become so much more. With a broader mission LP&CT expanded its role in the community. Trees were planted, educational programs started, and parks were acquired and endowed. Historic property was acquired for protection and rehabilitation. Our role brokering and driving projects has been demanding, while providing a true sense of worth. The **Jollene Dubner Park** is a great example. Jollene was an original board member; she had the vision of what land in a densely populated part of the city could be transformed to.

The coming year will not lack for interest. The Greenway will continue to be constructed. The **Hawk Valley Farm** will undergo further restoration, providing the community with a chance to see Lowell's agrarian history. **River Meadow Brook** could help us explore a possible route for the Bay Circuit Trail, connecting the Concord River with the Bruce Freeman Trail. We remain committed to tree planting, education, park management and land acquisition. We need to build on our endowed properties, to ensure their proper management. In celebration of our 20th Anniversary, you'll find that we've designed a **new logo** to more accurately reflect our mission. We are fortunate to have a membership that supports all our efforts financially and by volunteering for all our projects. Please help us broaden our membership with friends and family - there is much to be accomplished.

Kind regards,

Introducing our new logo... After 20 years, LP&CT is pleased to launch our new logo. We believe this logo more accurately reflects the essence of our organization. We're confident that with your support, this new logo will help propel us through the next era of our mission.

CORPORATE VOLUNTEERS

*Motorola
&
Patagonia
Employees
Make An
Impact*



Photo credit Patagonia.

Patagonia corporate employee volunteers tackled a difficult clean-up site at a scenic rafting overlook on the Concord River. From left, LP&CT's Brian Cutler, Betsy Pantazelos, Joy Stevens, Maggie Punsalan, LP&CT's Jennifer Loher, and Michael Taevs.

Corporate volunteers came out in full force this fall to create positive change on the ground. Teams from **Motorola** were helped all over the city, but LP&CT was fortunate to have three large teams help on the Concord River Greenway, along River Meadow Brook, and at Jollene Dubner Park. Motorola even provided a small grant to help cover our costs for supplies and tools. **Patagonia** (see p. 2) employees (from Boston, California, and New York) applied for their own grant to help us out in the field. Their work entailed one day learning about our new work on River Meadow Brook (assisting our partner Mass Audubon with an eco-inventory) and one day learning about the Concord River Greenway and tackling a long-needed clean-up site.

LP&CT thanks the Lowell Solid Waste & Recycling Office for providing dumpsters for both corporate clean-up events.

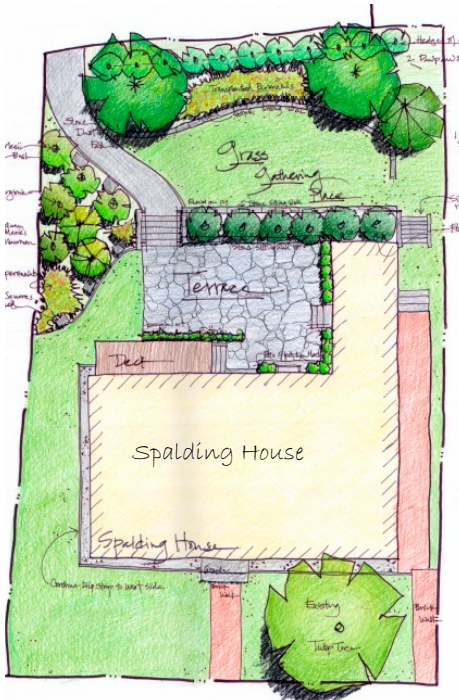


Motorola volunteers worked on several LP&CT projects, including River Meadow Brook clean-up (above) and Jollene Dubner Park.

SPALDING HOUSE LANDSCAPING

Thanks to input from a committee (page 3) of members like you and the technical support of **Clarissa Rowe, LA of Brown, Richardson & Rowe**, we've developed the landscape concept below for the back of the Spalding House. Please visit our website for a more detailed plan:

<http://www.lowelllandtrust.org/content/spalding-house>



**Can you help
make our
vision
become
reality?**

WHITEWATER RAFTING



Raft on the Concord River in Lowell! Weekends April & May Only!

It will soon be whitewater rafting season again! Experience this unique adventure right in your own backyard. Our rafting trips are unique because you can raft on natural spring flow, rather than dam-released water. The season is only as long as there is enough water to run the rapids—so make your reservation early! **Trips are operated in partnership with Zoar Outdoor on Saturdays and Sundays in April and May. Group trips on Fridays are also available. Get 9 people to raft and the 10th is free!**

All trips include two runs down the river through three sets of rapids (Class III and IV). At the end of the second run, you'll get to experience 'locking out' through the historic lock chambers behind UMass Lowell's Inn & Conference Center. **LP&CT's faithful lock-tending volunteers help provide this unique experience. Let us know if you're interested in locktending!**

If you would like to raft as part of a **group reservation**, we can mail you a 3-minute DVD to learn more about this adventure of a lifetime, 'right in your own backyard'.

All rafting proceeds support our work to establish the Concord River Greenway! We thank the UMass Lowell Inn & Conference Center and the Merrimack Repertory Theater for their support of our operations.



PATAGONIA VOLUNTEERS PITCH IN

LP&CT RECEIVES SIGNIFICANT GRANT SUPPORT FROM:

Theodore Edson Parker Fdn.
City of Lowell CDBG Program
Massachusetts Cultural Council



- Aubert J. Fay Charitable Fund
- Cultural Organization of Lowell (COOL)
- Richard K. Donahue Sr. Park Maintenance Fund & Alfred H. and Kathryn E. Coburn Park Fund & Mary J. Bacigalupo Community Fund of the Greater Lowell Community Foundation (GLCF)
- Demoulas Foundation Frances R. Dewing Foundation
- Joseph P. Donahue Charitable Foundation Trust
- EPA Healthy Communities Grant Program
- Fieldstone Foundation
- Greater Lowell Community Foundation
- Jessie B. Cox Charitable Trust Fund
- Lowell Cultural Council
- Massachusetts Environmental Trust
- New England Foundation for the Arts—Arts Jobs
- NLT Foundation
- Fund for the Arts, a restricted fund of the NE
- Foundation for the Arts
- Philips Medical Systems



patagonia® Patagonia has selected LP&CT to receive one of three grants through its "Voice Your Choice" program. **Please visit a Patagonia store March 10-31 to vote for LP&CT to receive one of these grants—the higher the vote count, the higher our grant!**

When Patagonia employee volunteers came to Lowell last fall (see page 1) they sent frequent "tweets", posted on their Facebook "wall" and then followed up by telling their story of exploring the city's wildlife and riparian corridors on-line at www.witnessforwildlife.org. Their interest in our work was made possible by your support which demonstrates community interest and investment in our mission. Here's an excerpt from their on-line article:

"As the day ended, we pushed our arsenal of shopping carts filled to the brim with filthy bedding, empty bottles, and litter to a dumpster provided by the City of Lowell. We got excited throwing things away because the day had been laborious on the body and heavy on the heart. It wasn't until that moment that my mood brightened because it dawned on me—there was a bigger picture to be seen here. Whoever first dared to dream that the Concord River had potential as a habitat and flourishing ecosystem in the heart of Lowell possessed better foresight than I had exhibited all day. In the long-term, there was potential for alevife to return here and for locals to appreciate the various urban oases that we discovered. I remembered my wonder at seeing the impressive wingspan of the heron in flight further down the river. It was then that it occurred to me that the goal of environmental work was not to find the disparity between humans and nature, but to find a middle ground for coexistence."

PAWTUCKET FALLS OVERLOOK PARK



Get out and enjoy your newest park this spring! After successfully protecting the former Red Cross property from development in 2007, we're excited that you have an opportunity to share in the vistas and connections that this new park behind the Spalding House will create. The new park has helped return the Spalding House to its historic connection with the Merrimack River. **We're grateful to the City of Lowell and the Lowell National Historical Park for their help in making our vision become reality.**

We thank the following for their support of the Spalding House's 250th Birthday:



Spalding House Endowment major donors and pledges to date:

- Richard & Nancy Donahue
- James L. Cooney Real Estate and Insurance
- Enterprise Bank
- Gilbane Construction
- The John Ford Family

Fundraising Chairperson:

James L. Cooney

Spalding 250th Committee: Stephen A. Conant (Chair), Sue Andrews, Laurie Cahalane, Jim & Susan Cooney, Elaine Crandall, Lew Karabatsos, Paul Marion, Kristin McCauley, Jamie O'Hearn

Spalding House Preparation Volunteers: Stephen A. Conant, Chair; Nancy Bax, Beverly Barry, Christine Brown, Christine Cole, Elaine Crandall, Lauris Donovan, Ruth Evans, Sheila Kirschbaum, Phillippe Loher, Jamie O'Hearn, Nancy Pitkin, Jack Reynolds, Mark Romanowsky, Deb Sofia, Glenn Szegedy, Charles Worsley

Flowers: Nancy Rourke **Sound & Music:** Nick Romanowsky

Silent Auction: Glenn Szegedy, coordinator, and the following artists: Lisa Anderson Bisson, Barbara Guilmet, Ilene Richard, Gay Tracy, Michal Truelson, Samantha Tucker, Anne Welcome, and Connie Wood

Catering, Wine, and Bartenders

- Bianco's Catering
- Levant & Dawn Bozkurt, Stonehedge Inn
- Romanowsky family & friends bartending team!

Invitations

- Kathy Hirbour
- Martha McGowan
- Jolin Shen

Spalding House Landscaping Design Committee: Beverly Barry, Nancy Bax, Dennis Coffey, Stephen Conant, Charlie Cutler, Lauris Donovan, Bill Foss, Gloria Gagnon, Chuck Griffiths, Kathy Hirbour, Sheila Kirschbaum, Kristin McCauley, Charlie McColough, Martha McGowan, Heddi Neiuwsma and Nathan Moore, Nancy Pitkin, Nancy Rourke, Deb Sofia

Landscaping Design Plan: Clarissa Rowe, LA, Brown & Rowe

WINTER 2011 PROGRAM SERIES

PLEASE RSVP (978) 934-0030



Family Nature Walk

Thursday, February 24, 2011, 10-11 am

Location: Concord River Greenway

Free -School Vacation Week Program!

Space is limited. Please RSVP. All ages welcome, most appropriate for ages 5-12.

Children must be accompanied by an adult. Please, join LP&CT's naturalist, Brian Cutler, for an exciting winter adventure along the **Concord River Greenway**. You'll explore the great outdoors along the river with a chance to observe tracks and signs of wildlife and learn about the remarkable adaptations of plants and animals that help them to tough-out harsh winters in New England.



Maple Sugaring

From Sap to Syrup

Saturday, February 26, 2011 2-4 pm

Location: Rogers Fort Hill Park, Rogers Street entrance, Lowell

Can you tell the real stuff from the imitation brands? Come on out to test your senses and learn about what it takes to tap a sugar maple and create a tasty delight. This is a fun activity for the whole family. Wear warm clothes and boots (we'll meet rain, snow or shine). This program is offered in partnership with Mass Audubon's Drumlin Farm Wildlife Sanctuary and The Friends of Rogers Fort Hill Park. **Space is limited, so please RSVP.**

Book Reading

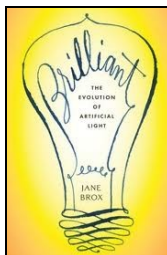
Thursday, March 10, 2011 7 pm

With author Jane Brox

Brilliant: The Evolution of Artificial Light



Location: Spalding House, 383 Pawtucket St, Lowell



Local author Jane Brox will read from her recently published book, *Brilliant: The Evolution of Artificial Light*. This will be a unique opportunity to experience the Spalding House's historic lighting collection. "Brilliant" was recently chosen by Time Magazine as #5 on its list of "Top 10 Nonfiction Books for 2010." Books will be available for purchase at the event. Space is limited—please **RSVP**.



Whitewater Rafting

Season begins April 2, 2011

Saturdays and Sundays, April & May, Trips run at 9:00 am and 1:00 pm

Raft the Class III & IV rapids of the Concord River!

RESERVATIONS:

www.zoaroutdoor.com/concordrafting.htm

Save The Date

Riverfest 2011: Culture Flows

June 11, 2011 12-5 pm

Celebrating the Concord River Greenway, local music and local art.



DID YOU KNOW?



Do your kids play soccer at the Edwards Field? Edwards Field was a former railroad roadhouse that somehow ended up in the hands of the Federal Deposit Insurance Corporation. The Lowell Parks & Conservation Trust, working in cooperation with the Trust For Public Land and the Lowell Youth Soccer Association, helped the City of Lowell acquire the 8.7 acre property in 1993. The city was able to strategically fund the project through a bond issue, budget line

items, and \$330,000 in state funding. At the time there was a great need for soccer fields and additional green space. The site is now a park with soccer fields and passive recreation that is managed by the city. This park is now one of the most heavily used in the city.

The Lowell Parks & Conservation Trust was recognized by the **Lowell Youth Soccer Association** last November in appreciation for our role in helping to acquire the land for the Edwards Field.

ASIAN LONG-HORNED BEETLE



Beetle Found in Worcester & Boston

A new highly invasive insect has been found in Massachusetts, which has the potential to cause widespread damage to a broad spectrum of tree species, endangering our beloved tree canopies. The invasive Asian longhorned beetle (ALB), *Anoplophora glabripennis* (Motschulsky), grows and reproduces within healthy and stressed deciduous

hardwood tree species, such as maple, birch, horse chestnut, poplar, willow, elm, and ash. The beetle eventually kills the host tree. Look for glossy black beetle, 1-1.5" long with white spots. This beetle is noticeable once found, especially near or on host tree species with exit holes about 3/8" around.

The ALB hitchhiked to the United States nestled deep within hardwoods cut into crates and pallets and used to import goods from Asian countries. Please keep an eye out for this beetle and report any sighting to 1-508-929-1300. We have actual samples for comparison if you find a questionable beetle! (Source: USDA APHIS)

DOUBLE YOUR DONATION

Ask your employer about its Matching Gift Program.

Current business participants include:

Arbella, Aspect, Autodesk, Inc., Bickling Financial, Bristol-Myers Squibb, ca, FHI, HP, IBM, Juniper Networks, Millipore, National Grid/MA Electric, Polaroid, Sun Microsystems, and Verizon.

Please remember to submit your **matching gift form** with your next donation to LP&CT.

FIND US ON:



facebook

WE THANK THE FOLLOWING FOR SIGNIFICANT IN-KIND SUPPORT:

Anstiss & Co., P.C.
 Eno, Boulay, Martin & Donahue
 LDFC/Lowell Plan
 UMass Lowell Inn & Conf. Center

'SPECIAL PLACES' PRINTS



A large selection of **Mark Romanowsky's** paintings are now available as true-to-size professional prints on canvas. All proceeds support the Lowell Parks & Conservation Trust.

www.lowelllandtrust.org or call us at (978) 934-0030.

ANNUAL FUND 2010 DONORS

Annual Fund Donors \$250+

Centennial Island Hydroelectric Company
 Lowell General Hospital

Annual Fund Donors \$100-249

Richard Brouillard, Nancy Bump, Eileen and Charles Byrne, Christine Cole, Bruce & Joann Conant, Kay & William Doyle, Nancy Dubner, Blake Ford, John Foresteire, Ms. Colleen Fuller, **Washington Savings Bank**, James and Terri L. Decker Kilmartin, George & Donna Leahy, Joe Mendonca, Alberta Mooney, Arthur Hennessey & Leslie Morin Hennessey, John Moynihan, **Notini's**, **Centennial Island Hydroelectric Company**, Michael and Caroline Rider, Corey Sciuto, Andrea Peraner-Sweet & Mitchell L. Sweet MD, Karin Theodoros, Esq.

Annual Fund Donors \$50-99

Peter & Rosemary Aucella, Judy & Alan Blackburn, Bruce & Helen Blaschke, John & Carol Gallagher, Mitchell & Barbara Guziejka Jr., Margaret & Robert Hartwell, Robert & Mary Johnson-Lally, Helen Littlefield, Henri & Nancy Marchand, Carol & Robert Marchand, **Ten Men, Inc.**, Nancy & Joseph Meehan, James O'Hearn, James Polcari, Norma Ricci, Amy Woo Skinner & Liam Skinner

Annual Fund Donors \$1-49

Newton & Charlotte Akashian, Ms. Suzanne Anderson, Kathleen & Brian Barry, Steve Smith & Anne Barton, Beverly Bennett, Mary Blewett, Bruce Boulter, Elizabeth Brady, David Bulman, Bernie Cassidy, William & Dorothy Clark, Mr. & Mrs. Leo Cloutier, Manuel & Ruth Coggan, Peter & Elizabeth Cole, Bruce Comjean, Andrew & Thelma Coravos, Beverly Coughlin, John Couture, Edward & Mary Croke, Suzanne deLesdernier, Bonni L. Dinneen, F.J. Duggan, Sandra & Thomas Eagan, Joyce Fafard, Helen & Richard Fearon, Julie Sarason & Paul Feuerstein, DMD, **Wyman's Exchange Assoc.**, Virginia FitzGerald, Shirley & Leonard Fitzgerald, Robert & Mary Fusaro, Lionel & Jeannette Gaulin, Jane Ginsburg, Mr. Frank Grady, Maureen Hancock, Donald Hogan, Tom & Barbie Hogan, Mary Ellen Hogan, Lynnda Ignacio, Donald H. & Vanessa Johnson, Stavros & Donna Kanaracus, Stephen and Mary Kandrotas, Theodore & Ruth Kosiavelon, Leo & Deborah Krygowski, Theresa Lally, Curtis LeMay, **Lenzi's Catering**, Frank Makarewicz, Stephen Marcaurette, Mr. Kurt E. Mathias, Mr. Daniel F. McCarthy, Patricia McCoy, William & Janet McMahon, James Moloney, George Montminy, O.D., Patricia & William M. Nickles, Frances Nowak, Barbara Page, Edward Parsons, Virginia & Robert Powers, Cecile Provencher, Kathleen Quill, Helen Regan, Michelle Ritchotte, Maria Robarge, Bruce Robinson, Joseph Rogers, Violet Santamaria, Joseph & Donna Smith, Brent Smith, Deborah Sofia, Mary Ann Szufnarowski, Jeanne Thompson, Mr. J. David Titterington, David Tweed & Mark Vincenzes, Reginald & Ruby Walker, James Waters, David Willey, Patricia Williams, Ms. Colleen Wojcik



LOWELL PARKS & CONSERVATION TRUST

- || cars
- || trucks
- || motorcycles
- || boats
- || rv's
- || campers

donate your vehicle



call: 866.628.2277

www.lowelllandtrust.org

PLEASE NOTE: ALL DONATIONS LISTED BELOW WERE RECEIVED BETWEEN **August 1, 2010—December 31, 2010**

SUSTAINING MEMBERS

Sustaining members provide ongoing monthly support. Donations noted below are annualized.

We've now made it easier for you to become a sustaining member (monthly donor)!

Sustaining Members (\$250+)

Walter Bacigalupo
Stephen A. Conant & Nancy Rourke
Matthew C. Donahue & Lisa Gwiazda
Nancy & Henri Marchand
The McCauley Family

Sustaining Members (\$100-249)

Cynthia & Charles Calvin, Beverly Coughlin, Jon & Joni Dubner, Matthew Foster, Robert & Jane Gilmore, Sheila Kirschbaum, John Moynihan, Bernard & Kathleen Petruzzello, Richard & Nancy Pitkin, DJ Prowell, Carolyn Walsh

Sustaining Members (\$1-99)

Brian Cutler, Elaine Demetroulakos, Laurel & David Martin, Lisa FitzGerald Wagner

JOLLENE DUBNER PARK

Jollene Dubner Donors (\$5000+)

Nancy Dubner

Jollene Dubner Donors (\$100-249)

Vanasse, Hangen and Brustlin, Inc.
David Bulman
Richard Gardner
Thomas McGuire
James & Anabel Milinazzo
Mark & Renee Romanowsky

Jollene Dubner Donors \$ 1-99

Dennis & Sharon Ducsik, Florence Hamilton, Theodore & Ruth Kosiavelon, Anne Perlmutter Klein, David & Margaret Reiter, Leonard Reiter, Thomas Rutherford
We thank Will Soucy and Soucy Iron Works for timely donation of fence repair services at the park!

HAWK VALLEY FARM

Louisa Varnum
Edward Perry

NON-SOIRÉE DONORS

Thank you to those that donated in lieu of attending our annual Soirée in honor of the 20th Anniversary of LP&CT and 250th Birthday of the Spalding House!

Jeanne D'Arc Credit Union
Greater Lowell Community Foundation
George Dana
Centennial Island Hydroelectric Company

IN MEMORY OF...

Esther Conant Ronald Gaulin
Jean Sweatt Erika Magill

RENEWING MEMBERS

Please support those businesses that support our work (bold).

Renewing Members \$ 500+

Lowell Five Cent Savings Bank

Renewing Members \$ 250+

George Behrakis, Alfred Coburn, Grace Conway, Michael Creasey, Steven & Jan Demetriou, Christine Dunlap, Dr. Stephen Fisher, Robert & Carolyn Gregoire, Donald Pearson, Mark & Renee Romanowsky, H. Bailey & Audrey Trull

Renewing Members \$ 100-249

Anonymous, **Anton's Cleaners, Pawtucket Pharmacy**, Robert Bassett, Donna & Daniel Brennan, Robert Caruso, Maria Cole, Beverly Coughlin, John & Pat Crane, Sr., Charles & Phyllis Cutler, Joanne Doherty, Lauris Donovan, George & Carol Duncan, Newell Flather, **Gath Insurance Agency, Inc.**, Robert Goldsmith, Terrence & Mary Gormley, William Foss & Charles Griffiths, **Washington Savings Bank**, Bob & Marianne Innis, Evan Schapiro and Belinda Juran, Rosemary Noon & Paul Marion, Bill & Martha Martin, Martha McGowan, William Mitchell, John Moynihan, Nathan Moore & Heddi Nieuwsma, Richard & Mary Noon, **Notini's, Frontier Development Corp.**, Melissa Pennell, Edward Perry, Bernard & Kathleen Petruzzello, Barbara Pike, Jack & Michele Reynolds, Norma Ricci, **Sagendorf, Taupier and Assoc.**, Bill Scarth, Sally Seaver, Daniel Singer, Julie Springwater, **New England Communities Inc.**, Mr. Arthur Turner, Francis Warren, Jr.

Renewing Members \$ 50-99

Stephen M. Laput & Adam Baacke, **Belanger & Foley, Inc.**, Maxa Berid, Carla Corey & Paul Buckley, Virginia Day, Veronika Demers, Elaine Demetroulakos, Carol Drapeau, Judith Durant, Richard Gardner, **Highland Maintenance Co.**, Stephen and Maureen Gervais, Robert & Hilde Gilman, Maureen Hancock, William & Eleanor Harrington, Sheila Harrington, Eva Herndon, Ms. Rachel Hervieux, Ernest & Ellen Huber, **Joncas Associates, HEFCO Wiring Co., Inc.**, William Lipchitz, Philippe & Jennifer Loher, **Frank P. McCartin Co., Inc.**, Ellen Mellen, Judith Mizner, Paul Morse, Kathy Muldoon, Martha & Rod Owen, Donna & Peter Richards, Johanna Bohan Riley, Ellen Scannell, Maurice Shirley, Deborah Sofia, Eileen Trainor, V.K. Tripathi, James Wilde, Nancy Williams, Beverly Woods, Mike & Carolyn Wurm, **Zoar Outdoor**

Renewing Members \$ 1-49

Denise Aggott, Jo Anne and Read Albright, Simone Allard, Deirdre & John Anderson, Mary Arnold, Will Arvidson, Vanessa & Marlene Banyas, Steve Smith & Anne Barton, **Subway**, George Bishop, James Bogue, Richard & Pamela Bohne, Carlos & Lidia Borges, Jim Brunelle, David Bulman, Carol & Ron Cannistraro, Charles & Deborah Cary, Kate Kennedy & Philip Chonacky, Robert Clement, Walter & Lynne Cole, Norman Comtois, Susan & Harold Coughlin, Sylvia Cowan, Laura Chase & Carolyn Cronin, Steve Currie, Anne Cutrumbes, George Dana, Michael and Margaret Dinneen, Joseph & Anna Donovan, Mr. George Drolet, Martha Duffy, William Dunklee, Fritz Eberle, Barbara & Christian Ehrenfels, Alma Espinosa, **Julie Sarason & Paul Feuerstein, DMD**, Evelyn Foster, Joyce Frazee, **A.G. Hardware Supply**, Gloria Gagnon, Esther Garland, Jonathan & Mary Geer, William Gendron, Jane Ginsburg, Pauline Golec, Raquel Ruiz & Stephen Haber, Sheila Hallissy,

Barbara Dunsford & Patrick Healey, Marcia & Joseph Herlihy, Robert Hevey, Nancy Hogan, Raymond Houde, Jay & Chrissy Hungate, Michael Jeans, Peter & Martha Kaselis, Jeffrey & Elaine Kean, Richard Kinnal, Justin Kwan, Curtis LeMay, George & Joan Mahoney, **Lowell Central Electric Co.**, Jane McCaffrey, Thomas & Virginia McCormick, Patricia McCoy, **McDonough Funeral Home**, Susan McGilvary, Attorney Dennis McHugh, Robert & Linda McLaughlin, Bernard & Roberta McNeil, Charles Meagher, Frederick Mellish, Arthur Milliken, Doris Molloy, Ms. Maura Nicholson, Gail & William Noonan, Catherine O'Donnell, Ann O'Donnell, Gail Pickering, Alma Ploof, Richard & Virginia Roberto, Ann Romanowsky, **Anne Ruthmann Photography**, Charles & Bessie Sadlier, Mary Sampas, Charles & Elizabeth Santagati, Violet Santamaria, Marina Schell, John H. Schofield, Earl Sidelinker, Brent Smith, Mary & John Splaine, Ms. Rebecca Stanton, Kent & Doris Sternstrom, Daniel Tenczar, Mark Turner, Ms. Louisa Varnum, Peter Ventura, Norma Vonfricken, Chris & Penny Vurgaropoulos, Alethea Yates & Lee Walus, Leanne Gillis & Kevin Wayne, Jackie Wilburn-Wild & David Wild, David Willey, Hongwen Zhang

SPALDING HOUSE 250TH

Thank you to the following donors to the Spalding House's 250th birthday. All proceeds will support the Spalding House Endowment so that the house will still be here for its 500th!

Spalding House Donors \$1500+

Enterprise Bank

Spalding House Donors \$500

Edward & Sarah Krapels
Nancy Rourke & Stephen Conant

Spalding House Donors \$250+

Lowell Heritage Partnership, Lowell National Historical Park, Jan & Bob Audet, Christine Cole, Bruce & Joann Conant, Richard K. & Nancy Donahue, Lisa A. Gwiazda & Matthew Donahue, Kay & William Doyle, Thomas & Heather Kirwin, George & Donna Leahey, Henri & Nancy Marchand, Kristin & Bill McCauley, John Moynihan, Richard & Nancy Pitkin, Sally & Dick Pratt, Mark & Renee Romanowsky, **The Lowell Plan**

Spalding House Donors \$100-249

Dorothy Bickling, **Mill City Environmental**, James Coleman, Elaine Crandall, John & Pat Crane, Sr., Michael Creasey, George Dana, Lauris Donovan, Carol Drapeau, Newell Flather, Tim Frechette, Ellen Harde, **Joncas Associates**, Susan & Lewis Karabatsos, Brian Leahey, Janet Lambert-Moore, Bill & Martha Martin, Jay Mason, Marjorie Miller, George Montminy, O.D., James O'Hearn, Edward Parsons, R. Edward Roach, Ellen Scannell, Deborah Sofia, Germaine & Ed Trudel, Greater Lowell Community Foundation

Spalding House Donors \$50-99

Sheila Kirschbaum
Beverly Coughlin
Carol & Robert Marchand

Spalding House Donors \$1-49

Bruce Boulter, Virginia FitzGerald, Jane Ginsburg, Margaret & Robert Hartwell, Philippe & Jennifer Loher, Martha McGowan, Maria Robarge

ANNUAL FUND DONORS ARE LISTED ON PAGE 4.

