

Concord River Greenway – Outdoor Classroom Web Site

Photo, Video, Map Credits: History Sections

“Concord River History”



Lowell National Historical Park



Lowell National Historical Park



Lowell National Historical Park

Concord River Greenway – Outdoor Classroom Web Site



Lowell National Historical Park

“Native Americans, Colonial Settlement and the Concord River”



THE LOG MEETING HOUSE AT WAMESIT AS IT WAS WHEN DEMOLISHED ABOUT 1823.

Image from *Contributions of the Old Residents Historical Association*, v.3 (1903)

“Industrialization”



Lowell National Historical Park



Lowell National Historical Park



Center for Lowell History



American Textile History Museum

Concord River Greenway – Outdoor Classroom Web Site



Photo from *The Mills of the American Woolen Company* (1901)



Photo by Gray Fitzsimons



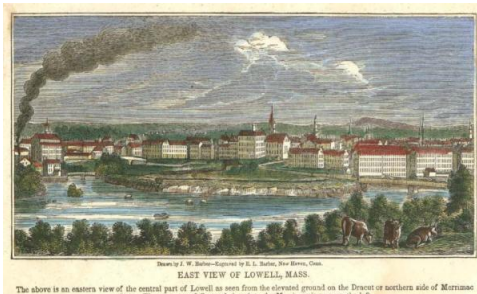
Bing Maps © 2010 Microsoft Corporation

“Industrialization”

Video: Hear Professor Robert Farrant discuss the growing plight of manufacturers in Lowell.

Video: Hear John Quealy describe the quality of the corduroy produced at the Waterhead Mills.

“Cultural Views of the River”



Center for Lowell History



Getty Images



Thoreau Society Collections at the Thoreau Institute

Concord River Greenway – Outdoor Classroom Web Site



Correction needed: Byfield

Source: Historical Society of Old Newbury



Bing Maps © 2010 Microsoft Corporation

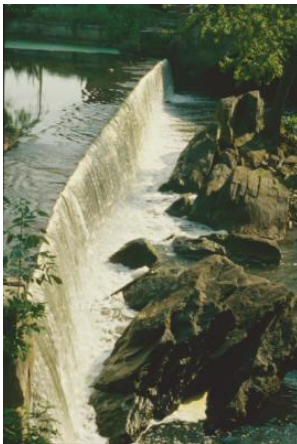


Photo by Charles Parrott

Concord River Greenway – Outdoor Classroom Web Site



Center for Lowell History

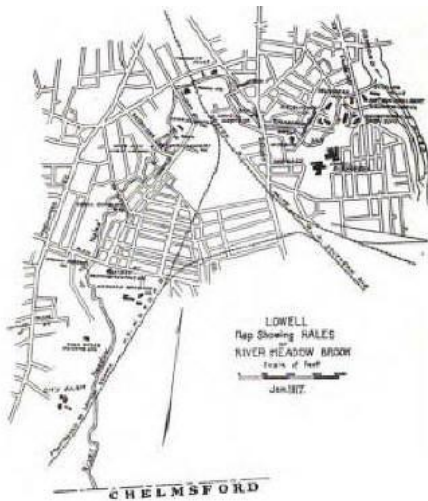
“River as Sink and Sewer”



Lowell National Historical Park



Lowell National Historical Park

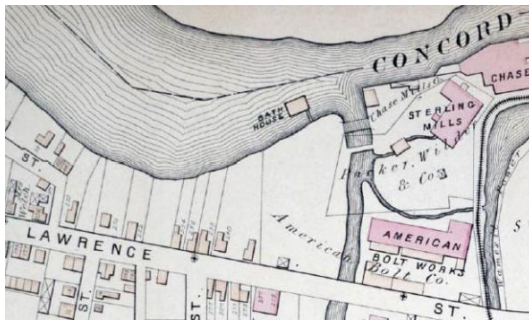


Second Annual Report of the State Department of Health of Massachusetts, (Boston: Wright & Potter Printing Co., 1917).

“River for Health and Recreation”



Lowell National Historical Park



Center for Lowell History



Center for Lowell History

“Concord River Neighborhoods”



Lowell National Historical Park



Center for Lowell History



Bing Maps © 2010 Microsoft Corporation

Concord River Greenway – Outdoor Classroom Web Site



Bing Maps © 2010 Microsoft Corporation



Photo from *Lowell: A City of Spindles* (1900)

Video: *Hear Mary Lou Looney talk about growing up in a cold-water tenement in Lower Belvidere in the 1950s.*

Video: *Hear long-time Swede Village resident John Quealy discuss changes in his neighborhood.*

Photo, Illustration, and Map Credits: Science Sections

“Splash (Home) Page”



Photo by Brian Cutler.



Photo by Brian Cutler.



Photo by Brian Cutler.

Concord River Greenway – Outdoor Classroom Web Site



Photo by Brian Cutler.



Photo by Brian Cutler.



Photo by Brian Cutler.



Photo by Brian Cutler.

“Science”



Photo by Brian Cutler.

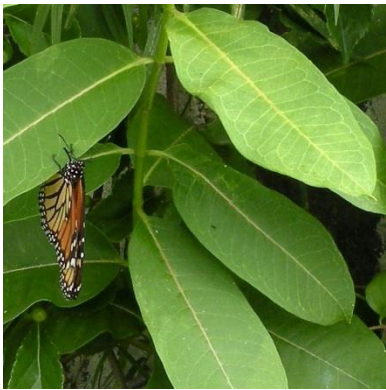
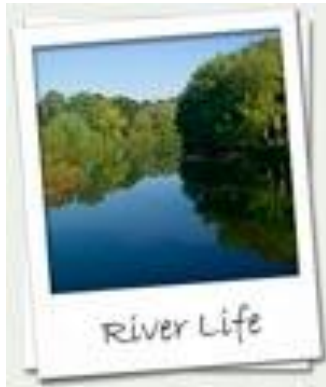


Photo by Brian Cutler.



Illustration by Brian Cutler.

Concord River Greenway – Outdoor Classroom Web Site



Per John Wren.

"Glossary"

Glossary as phrased by Brian Cutler.

“Bird Life”



Photo by Brian Cutler.



Per John Wren.



Photo by Brian Cutler.

Concord River Greenway – Outdoor Classroom Web Site



Photo by Brian Cutler.



Photo by Brian Cutler.



Photo by Brian Cutler.

Concord River Greenway – Outdoor Classroom Web Site



Photo by Brian Cutler.



Images courtesy of Mass Audubon – Drumlin Farm Wildlife Sanctuary.



Photo by Brian Cutler.

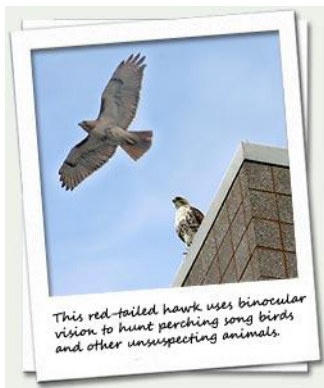
Concord River Greenway – Outdoor Classroom Web Site



Photo by Brian Cutler.



Photo by Robinson Middle School youth (Lowell).



Edited and modified version of the two above photos. Edited and modified by John Wren.

Concord River Greenway – Outdoor Classroom Web Site



Photo by Brian Cutler.

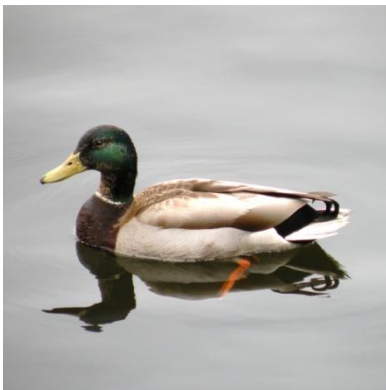


Photo by Brian Cutler.

“Bird Life”



Photo by Brian Cutler.



Photo by Brian Cutler.



Photo by Brian Cutler.

Concord River Greenway – Outdoor Classroom Web Site



Photo by Brian Cutler.



Photo by Brian Cutler.



Photo by Brian Cutler.

Concord River Greenway – Outdoor Classroom Web Site



Photo by Brian Cutler.



Photo by Brian Cutler.



Photo by Brian Cutler, beetle rancher, (Beetle Ranching Project, Neponset River Watershed Association).

Concord River Greenway – Outdoor Classroom Web Site



Photo by Brian Cutler.



Photo by Brian Cutler.



Photo by Brian Cutler.

Concord River Greenway – Outdoor Classroom Web Site



Photo by Brian Cutler.



Photo by Brian Cutler.



Photo by Brian Cutler.

Concord River Greenway – Outdoor Classroom Web Site



Photo by Brian Cutler.



Photo by Brian Cutler.



Photo by Brian Cutler.

Concord River Greenway – Outdoor Classroom Web Site



Photo by Brian Cutler.

“River Life”



Photo by Brian Cutler.

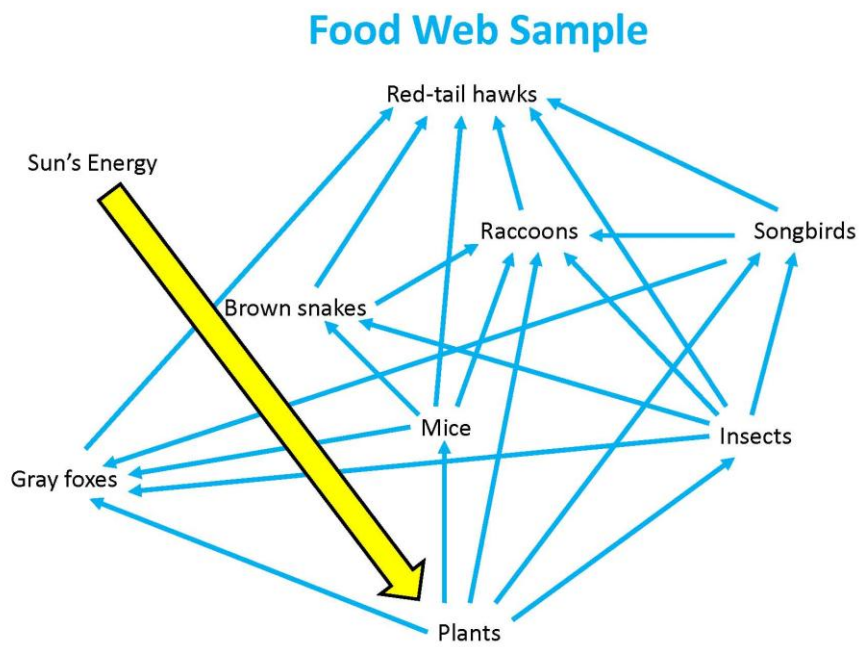


Illustration by Brian Cutler.

Concord River Greenway – Outdoor Classroom Web Site



Photo by Brian Cutler.

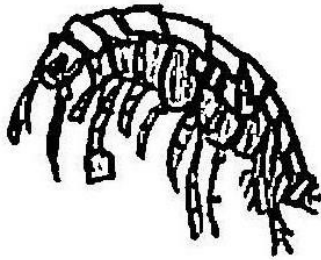


Illustration by Brian Cutler.

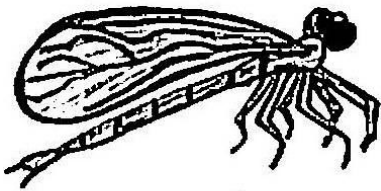


Illustration by Brian Cutler.

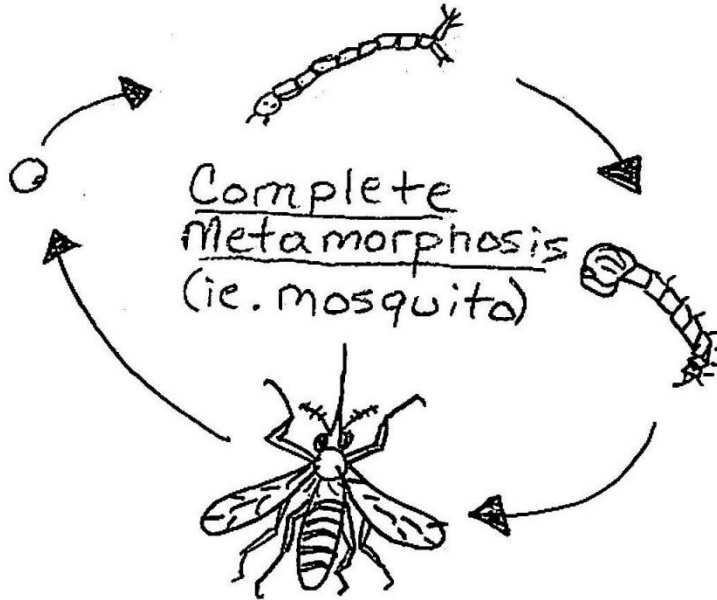


Illustration by Brian Cutler.

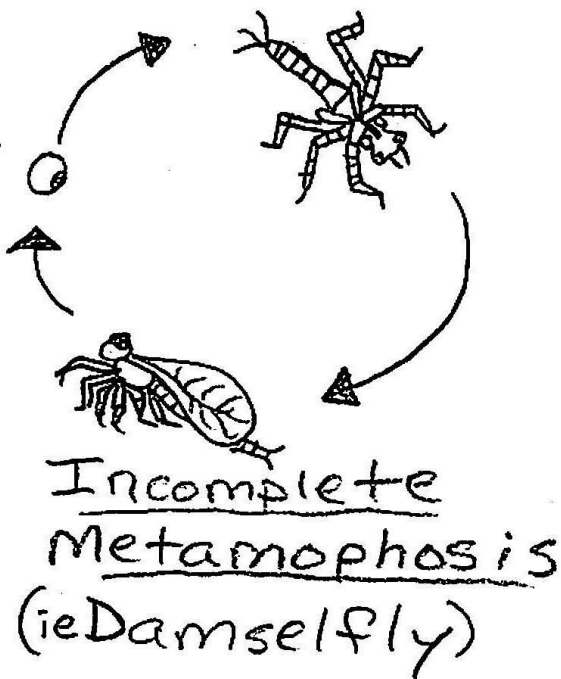


Illustration by Brian Cutler.

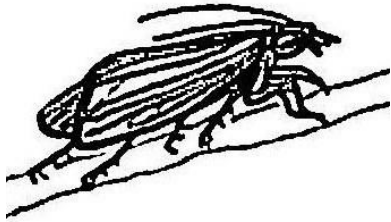


Illustration by Brian Cutler.



Photo by Brian Cutler.



Photo by Brian Cutler.

Concord River Greenway – Outdoor Classroom Web Site



Photo by Brian Cutler.



Photo by Brian Cutler.



Photo by Brian Cutler.

Concord River Greenway – Outdoor Classroom Web Site



Photo by Brian Cutler.

“Wildlife Tracks and Signs”



Photo by Brian Cutler.



Photo by Brian Cutler. (Clarification- This image was taken in Sedona, Arizona.)

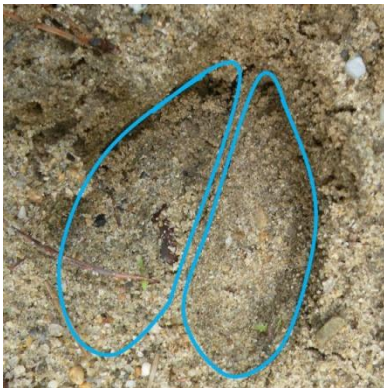


Photo by Brian Cutler. Graphic editing by Brian Cutler.

Concord River Greenway – Outdoor Classroom Web Site



Photo by Brian Cutler.



Photo by Brian Cutler.



Photo by Brian Cutler.

Concord River Greenway – Outdoor Classroom Web Site

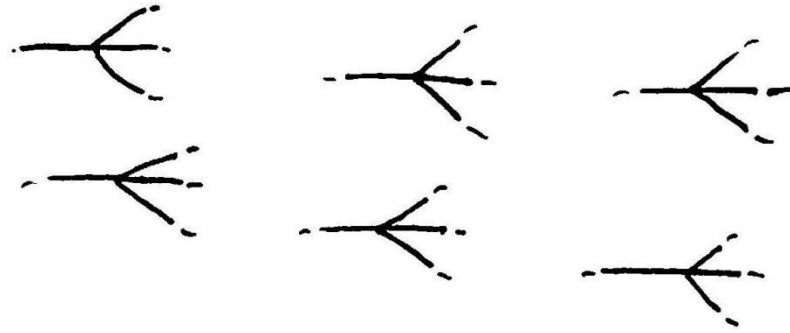


Illustration by Brian Cutler.



Photo by Brian Cutler.



Photo by Brian Cutler.

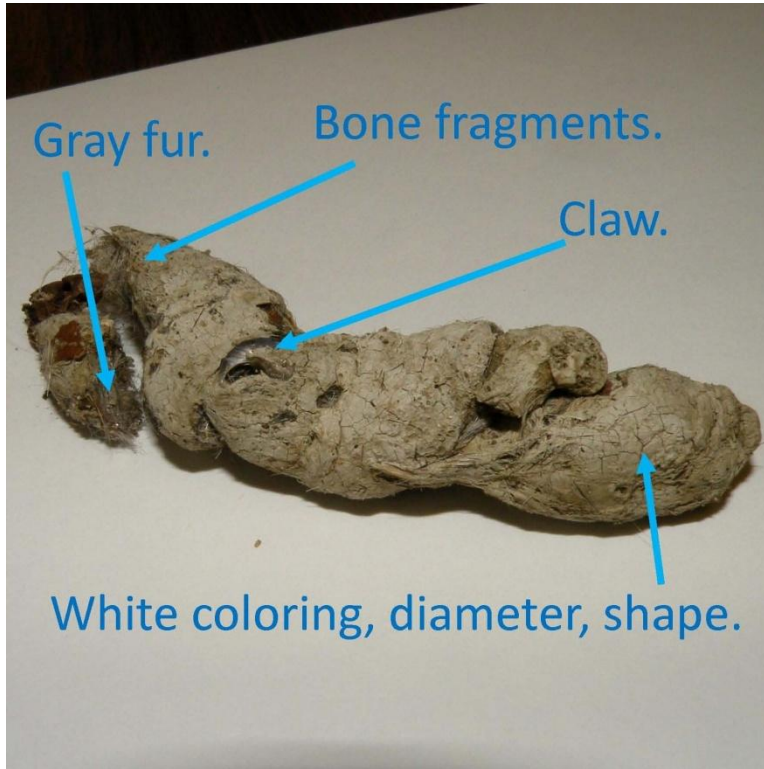


Photo by Brian Cutler. Graphic editing by Brian Cutler.



Photo by Brian Cutler.

Concord River Greenway – Outdoor Classroom Web Site



Photo by Brian Cutler. Graphic editing by Brian Cutler.



Photo by Brian Cutler.

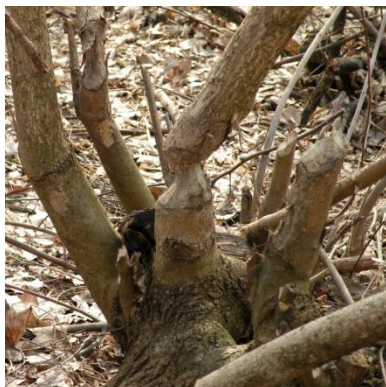


Photo by Brian Cutler.



Photo by Brian Cutler.